

TOSHIBA

TOSHIBA Thermal Printer

B-SV4D SERIES

Parts List

Document No. **EO8-33013**

Original **May, 2003**
(Revised)

TOSHIBA TEC CORPORATION

PRINTED IN JAPAN

HOW TO USE THIS PARTS LIST

- 1) Indication of Ref. No.

1 - 1

- Consecutive Number

Section Number

- 2) Remarks column indicates the following information:

- (1) Interchangeability of parts
- (2) Accessory
- (3) Service part
- (4) Date when the parts are added/deleted/changed

- 3) The columns from A through K indicate the quantity/unit for each model.
The letters A to K represent the model names which are described in the foot note.

- 4) The recommended parts column indicates the recommendation of parts stock.

Q'ty/100 Units

Class A ----- 10

Class B ----- 7

Class C ----- 5

Class D ----- 3

Class E	-----	1
---------	-------	---

- 5) Miscellaneous parts (screws, washers, etc.) shall be ordered in minimum lots of 100.

- 6) As a rule, parts not listed in this parts list cannot be ordered and we will not be responsible for problems concerning these parts.

- 7) The illustrations are provided by PDF files and attached to the list of each section. To refer to the illustrations, double-click on the PDF file icons.

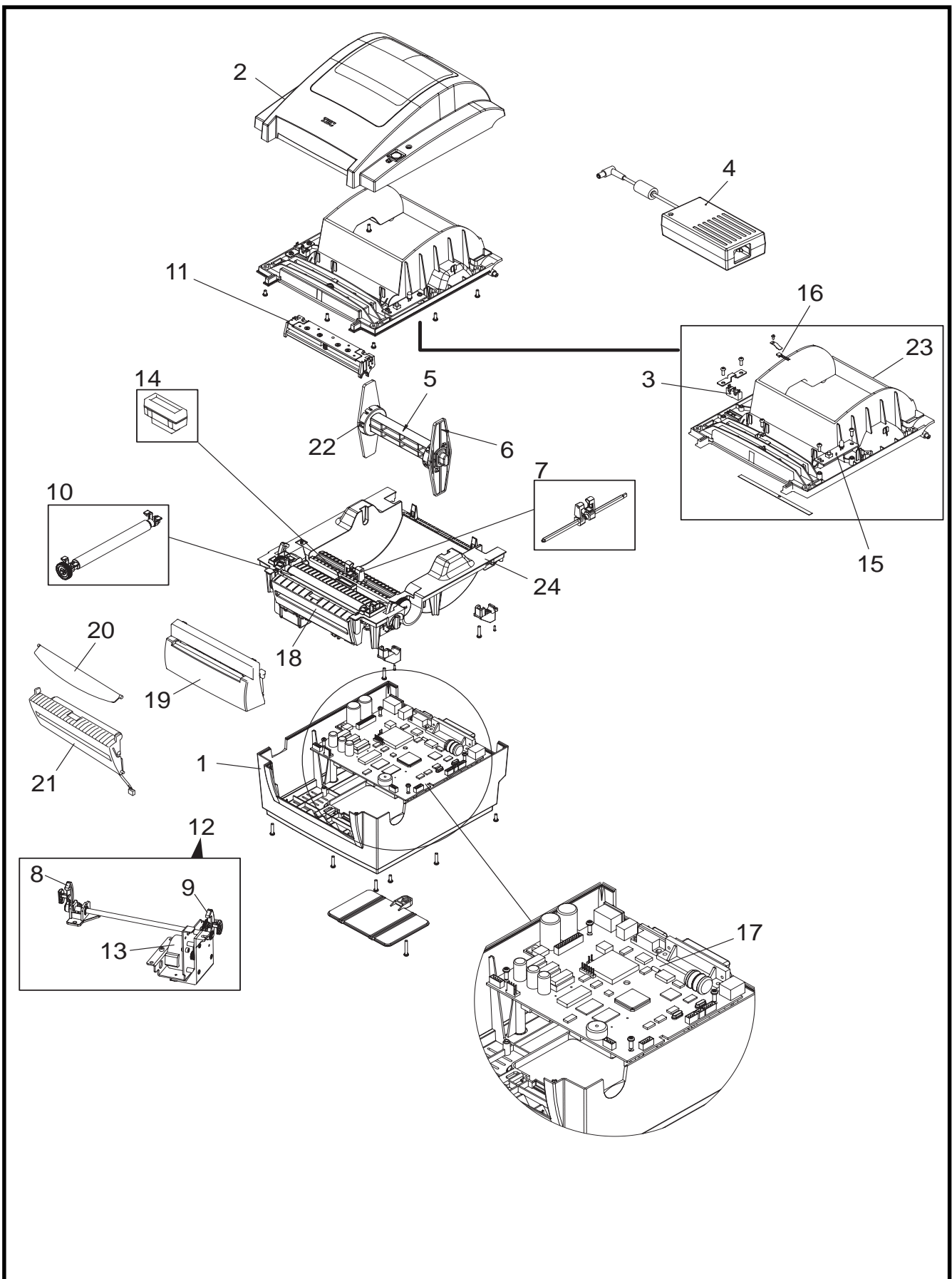
NOTES

1. *Parts with no Ref. No. and quantity are interchangeable parts.*
2. *The parts shown in this list may be modified by TOSHIBA TEC together with issuing the parts information, if necessary.*
3. *The illustrations in this parts list are provided for reference and may be different from the actual parts in shape.*
4. *For the underlined assembly parts, the components are available separately.*
5. *"-----" in the Part No. cell in place of a part number means that the part is an optional equipment and should be ordered from the Sales Department.*

MECHANICAL PARTS

EO8-33013
B-SV4D SERIES May, 2003
(Revision Date: Jan. 17, 2007)

1 B-SV4D Main Parts



1. B-SV4D Main Parts 1

EO8-33013
B-SV4D SERIES May, 2003
(Revision Date: Jan. 17, 2007)

Ref. No.	Part No.	Description	Remarks	A	B	C	D	E	F	G	H			Recommended Parts
1-1	FMYC0002601	Lower Cover Ass'y		1	1	1	1	1	1	1	1			
1-2	FMYC0002701	Top Cover Ass'y		1	1	0	0	0	1	1	0			
	FMYC0002702	Top Cover Ass'y (CGE)	Added: 8/05	0	0	0	0	1	0	0	1			
	FMYC0005801	Top Cover Ass'y (US)	Added: 8/05	0	0	1	0	0	0	0	0			
	FMYC0005802	Top Cover Ass'y (US)	Added: 8/05	0	0	0	1	0	0	0	0			
1-3	FMYC0002801	Cover Open Switch	Applied to Serial No. 3Hxxxxxx	1	1	0	0	1	0	0	0			B
	FMYC0002802	Cover Open Switch	Applied to Serial No. 3Kxxxxxx or later	1	1	1	1	1	1	1	1			B
1-4	FMYC0002901	Power Adapter		4 0	4 0	1	1	4 0	0	0	0			E
	FMYC0002902	Power Adapter	Changed: 6/06	1	1	0	0	1	1	1	1			
1-5	FMYC0003001	Media Shaft		1	1	1	1	1	1	1	1			
1-6	FMYC0003101	Media Holder	Corrected: 6/06	4 2	4 2	4 2	4 2	4 2	4 2	4 2	4 2			
1-7	FMYC0003201	Media Guide		1	1	1	1	1	1	1	1			
1-8	FMYC0003301	Cover Release Lever (R)		1	1	1	1	1	1	1	1			
1-9	FMYC0003401	Cover Release Lever (L)		1	1	1	1	1	1	1	1			
1-10	FMYC0003501	Platen Ass'y		1	1	1	1	1	1	1	1			B
1-11	FMYC0003601	Print Head Ass'y		1	1	1	1	1	1	1	1			A
	FMYC0003602		Changed: 8/05											
1-12	FMYC0005101	Stepping Motor Ass'y		1	1	1	1	1	1	1	1			
1-13	FMYC0003901	Stepping Motor		1	1	1	1	1	1	1	1			E
1-14	FMYC0004001	Media Sensor Ass'y		1	1	1	1	1	1	1	1			B
1-15	FMYC0004201	Push Button Ass'y		1	1	1	1	1	1	1	1			
1-16	FMYC0004101	Feed Gap Sensor Ass'y (Tr)		1	1	1	1	1	1	1	1			B
1-17	FMYC0004302	Main PCB (SPP) Ass'y		4 0	1	0	0	0	0	1	0			E
	FMYC0004303	Main PCB (SPP) Ass'y	Added: 8/05	1	0	0	0	1	1	0	1			E
	FMYC0005701	MAIN PCB Ass'y (US)	Added: 8/05	0	0	1	1	0	0	0	0			E
U18	FMYC0005901	RS-232C IC	Added: 6/06	1	1	1	1	1	1	1	1			
U14	FMYC0004702	Cutter Driver IC	Added: 6/06	0	1	0	0	0	0	1	0			
	FMYC0004701	Cutter Driver IC	Added: 6/06	0	1*	1	1	0	0	0	0			
1-18	FMYC0004501	Front Cover		1	0	0	0	1	1	0	1			
1-19	FMYC0004801	Cutter Unit		0	4 0	0	1	0	0	0	0			E
	FMYC0004802	Cutter Unit	Changed: 6/06	0	1	0	0	0	0	1	0			E
1-20	FMYC0006301	Strip Sensor Shield Plate	Added: 8/05	0	0	1	0	0	0	0	0			
1-21	FMYC0006701	Strip Unit	Added: 8/05	0	0	1	0	0	0	0	0			E
1-22	7FM02473000	Media Holder Spacer	Added: 6/06	2	2	2	2	2	2	2	2			
1-23	7FM02472000	Top Cover Inner Frame	Added: 6/06	1	1	1	1	1	1	1	1			
1-24	7FM02665000	Lower Cover Inner Frame	Added: 1/07	1	1	1	1	1	1	1	1			
* This cutter driver IC is a service spare part for the old (non RoHS compliant) Main PCB Ass'y of the B-SV4D-GC10-QM model. This part cannot be used on the new (RoHS compliant) Main PCB Ass'y ("40-0500001-40" and a Pb prohibited mark are printed on the PCB.)														